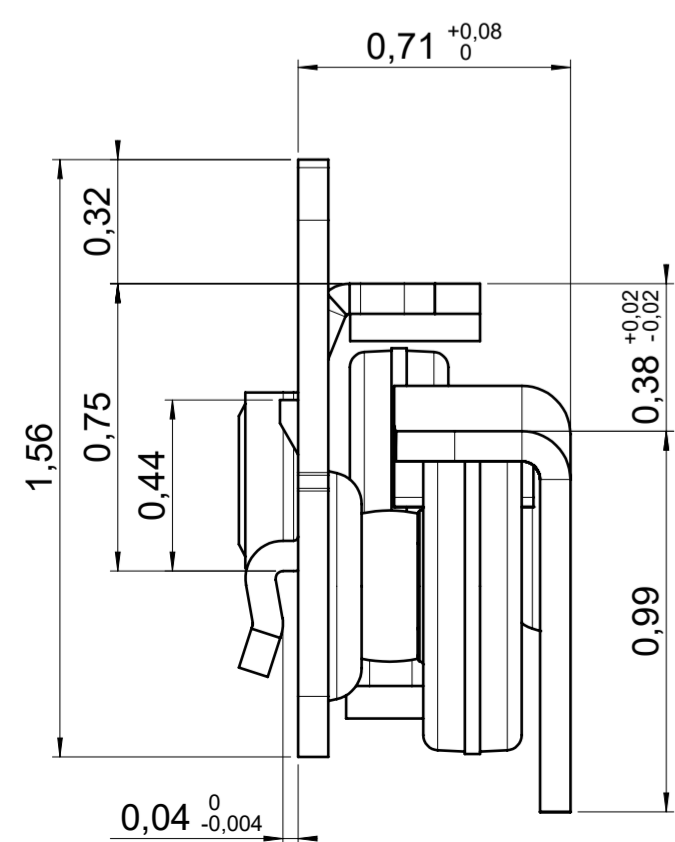
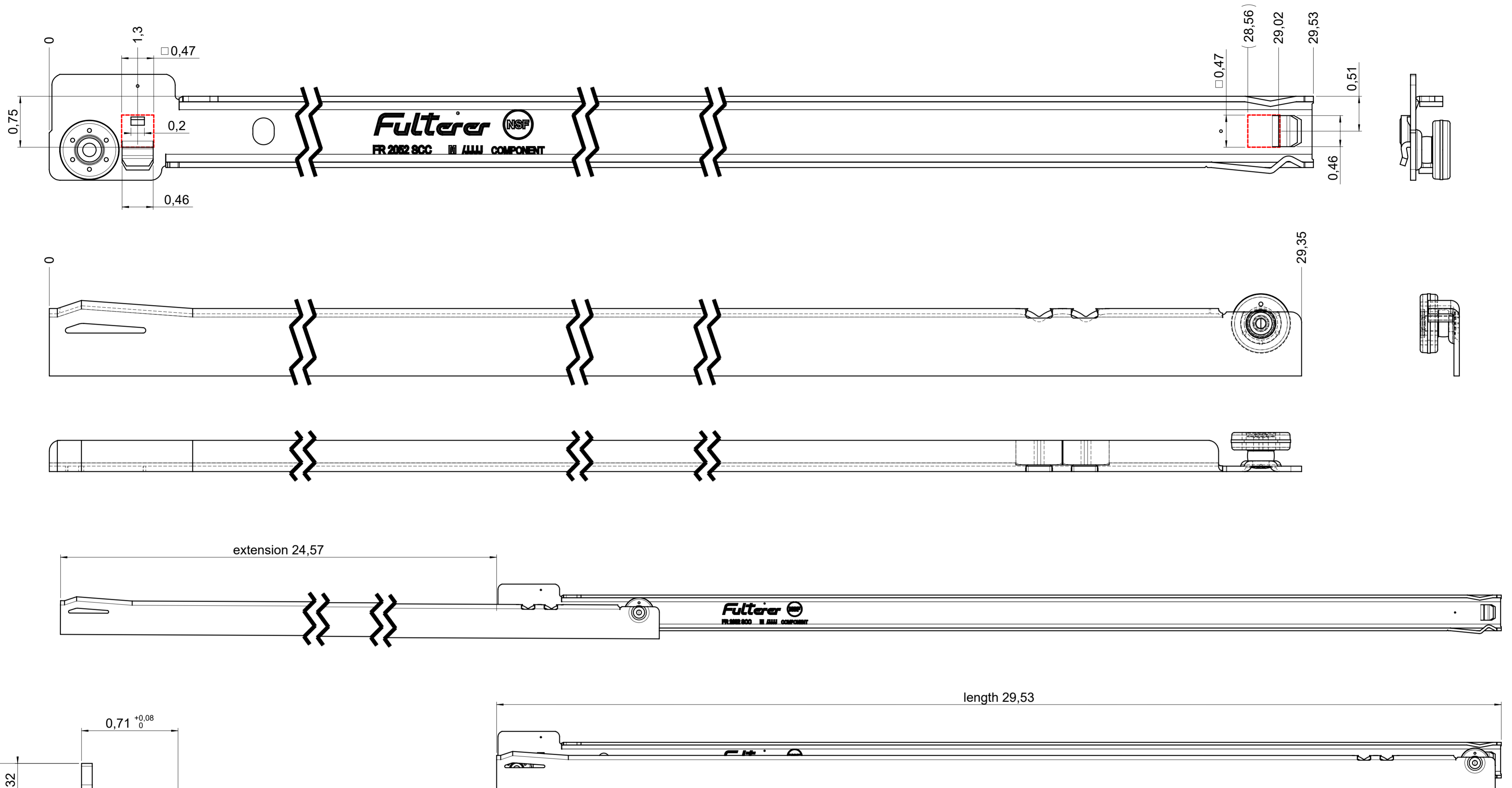


drawn left



final approval

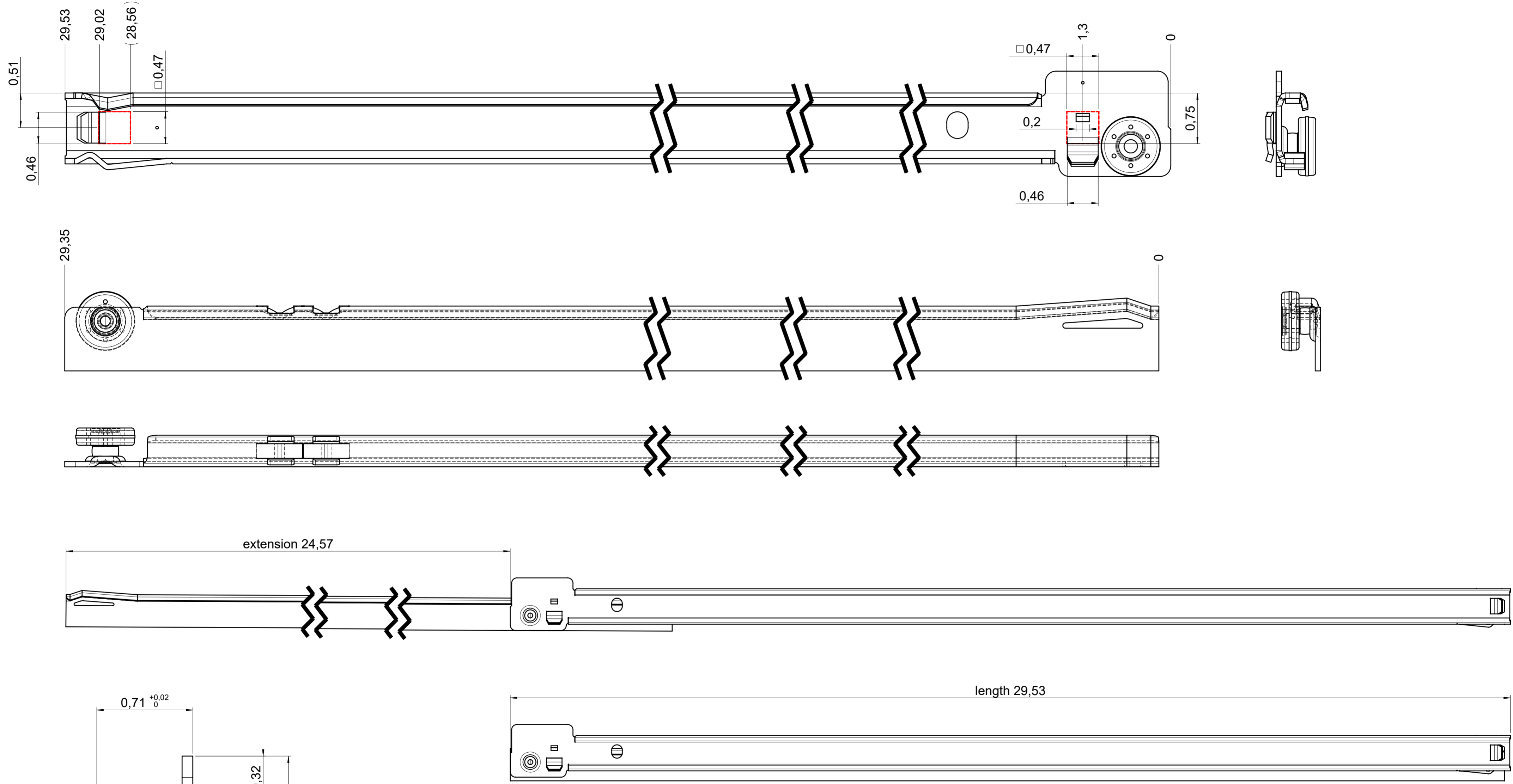
customer name:

signed by:

date:

all dimensions in inch			DIN ISO 128-30 missing dimensions see 3D = theor. intersection	
This drawing remains our property and may not be multiplied neither be disclosed to third parties (§§1,3 and 5 from the copyright Act (UrhG)) covered according to DIN ISO 16016				
scale: 1:1		surface:		material, semi finished parts: CS (technical requirements Fulterer)
(k)	date	name		description: FR 1052 / 75 CS EN (inch) regular-extension drawerslide / side mount
(l)	drawn 01-02-2023	ex		
(h)	proven 01-03-2023	pr		
(g)				
(f)				drawing number: CS# 1052.750-GA.L032.li replaces version date:
(e)				
(d)				
(c)				
(b)				
(a)				
ind.	changes	date	na.	

drawn right



final approval

customer name:

signed by:

date:

all dimensions in inch				DIN ISO 128-30 missing dimensions see 3D = theor. intersection	
This drawing remains our property and may not be multiplied neither be disclosed to third parties (§§1,3 and 5 from the copyright Act (UrhG)) covered according to DIN ISO 16016					
scale: 1:1		surface:		material, semi finished parts: CS (technical requirements Fulterer)	
drawn	date	name	ex	description: FR 1052 / 75 CS EN (inch) regular-extension drawerside / side mount	
proven	01-02-2023	ex	pr	drawing number: CS# 1052.750-GA.L032.re	
			replaces version date:		
Fulterer AG & Co KG A-6890 Lustenau / Austria		drawing number: CS# 1052.750-GA.L032.re			
Fulterer AG CH-9430 St. Margrethen		replaces version date:			
ind.	changes	date	na.		