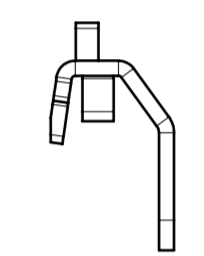
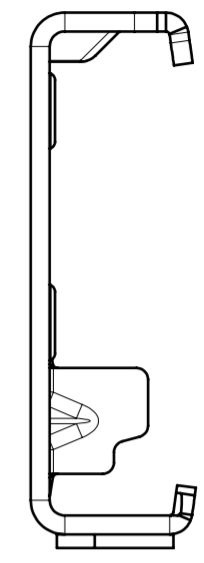
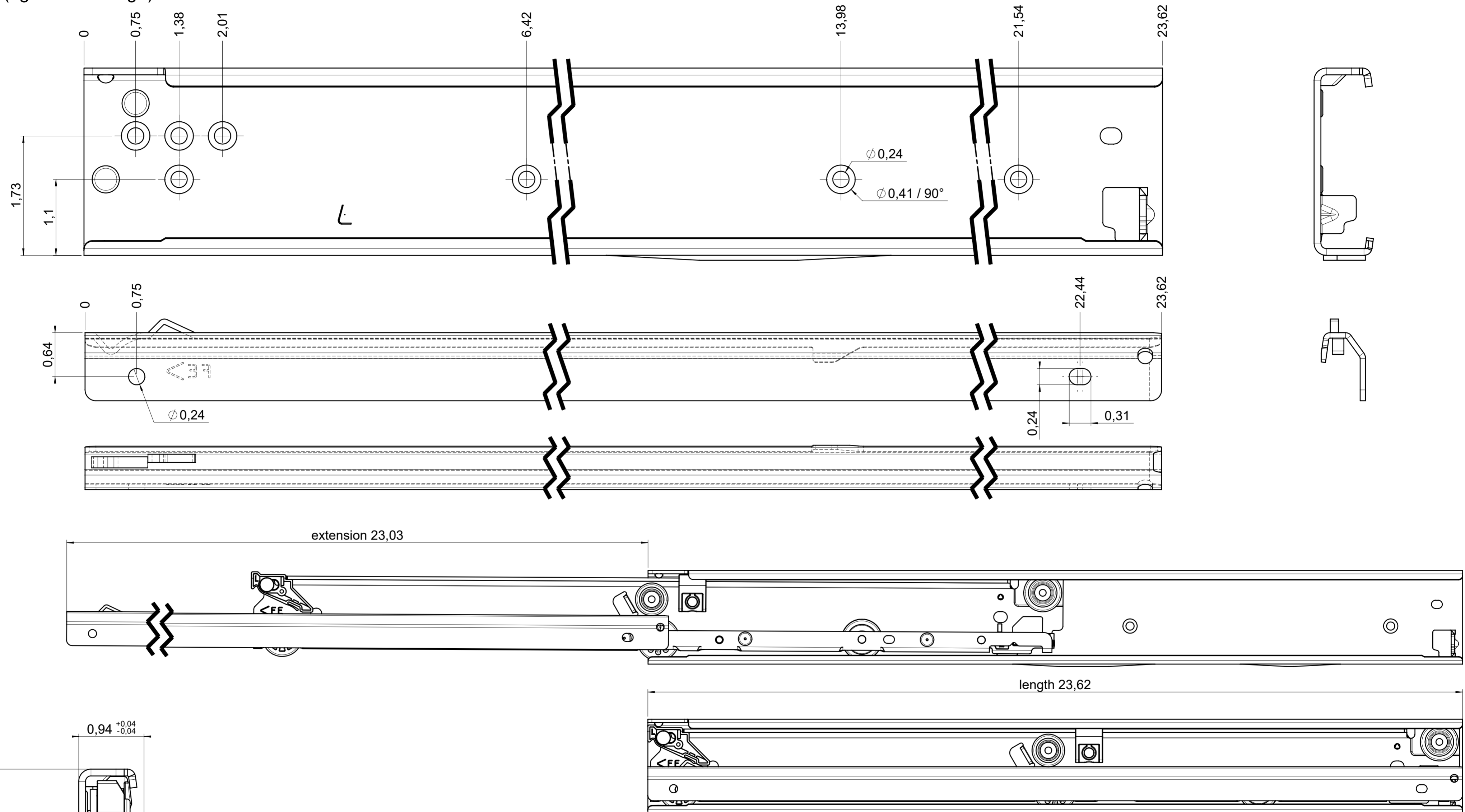


drawn left (right mirrorimage)



**final approval**

customer name:

signed by:

date:

<b>all dimensions in inch</b>			DIN ISO 128-30 missing dimensions see 3D = theor. intersection	
This drawing remains our property and may not be multiplied neither be disclosed to third parties (§§1,3 and 5 from the copyright Act (UrhG)) covered according to DIN ISO 16016				
(k) (l) (m) (n) (o) (p) (q) (r) (s) (t) (u) (v) (w) (x) (y) (z)	scale:	surface:		material, semi finished parts: <b>CS</b> (technical requirements Fulterer)
	1:1			
	drawn	date	name	
	proven			
	05-01-2023	BM		description: <b>FR 7101 / 60 CS EN (inch)</b> progressive-action full-extension drawerslide / side mount
	00-00-0000	00		
<b>Fulterer</b>			drawing number:	
Fulterer AG & Co KG A-6890 Lustenau / Austria Fulterer AG CH-9430 St. Margrethen			<b>CS# 7101.600-GA.0000</b> replaces version date:	
ind.	changes	date	na.	