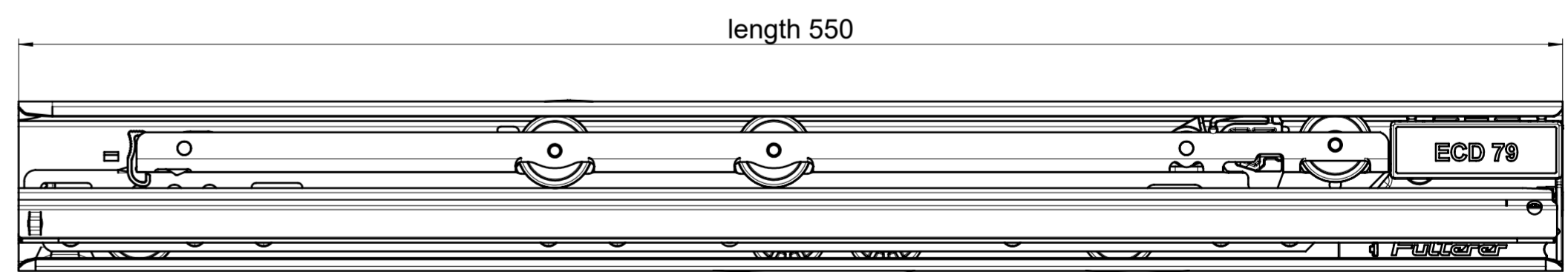
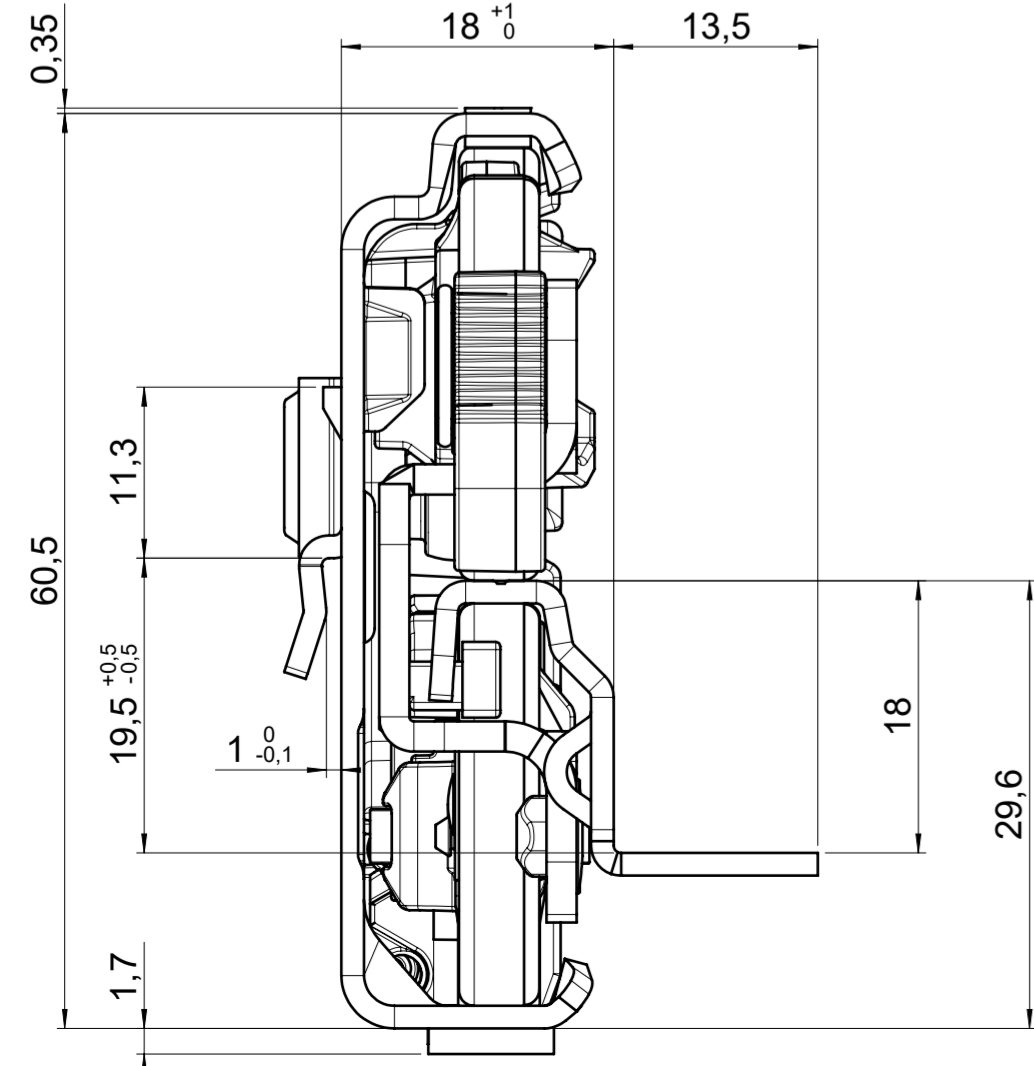
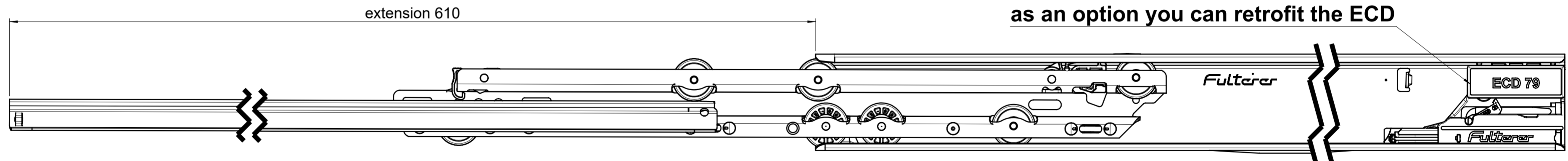
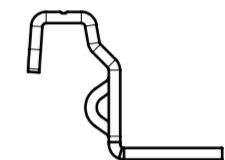
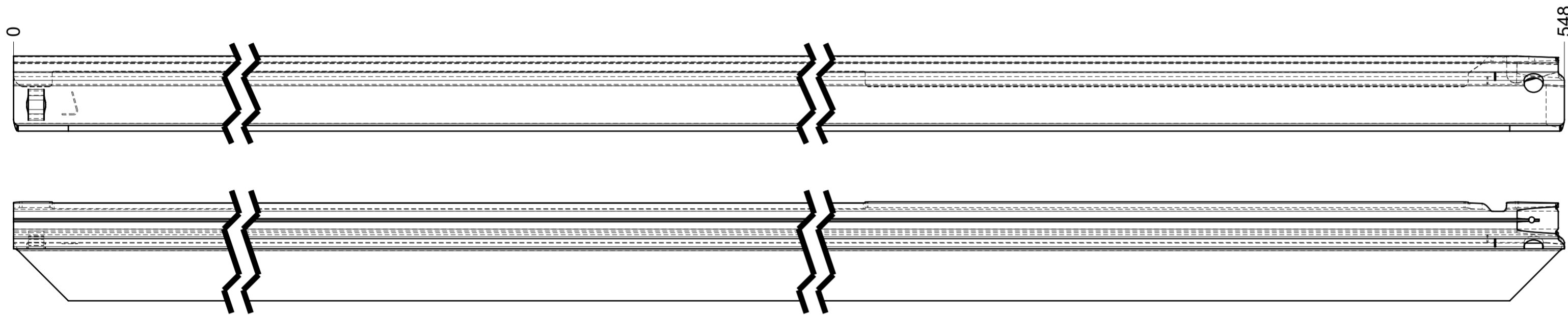
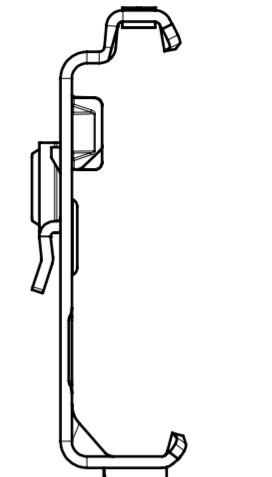
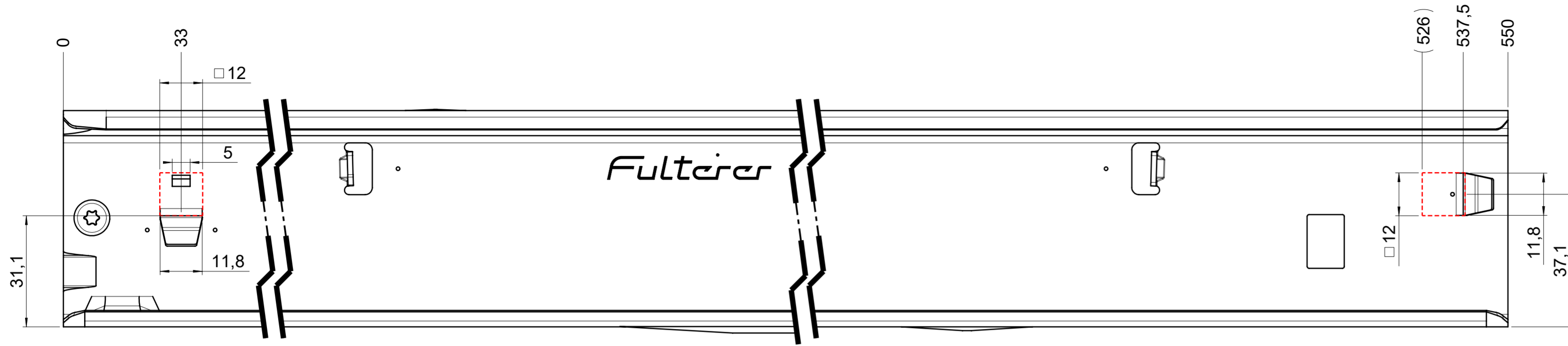


drawn on the left (mirrored on the right)



final approval

customer name:

signed by:

date:

all dimensions in mm			
missing dimensions see 3D = theor. intersection	scale: 1:1	surface/color:	material: CS (technical requirements Fulterer)
prototype approval	drawn: 2024-01-15 RK	date: 2024-01-15	name: RK
	proven: 2024-01-15 RK	description: FR 796-550 CS EN (mm) progressive-action over-extension drawerslide / bottom mount	
<p>Fulterer AG & Co KG A-6890 Lustenau Fulterer AG CH-9430 St. Margrethen</p>			drawing number: CS# 796.550-GA.L525 replaces the edition:
ind. changes			date name
<small>This drawing remains our property and may not be multiplied neither be disclosed to third parties (§§1.3 and 5 from the copyright Act (UrhG)).</small>			<small>covered according to DIN ISO 16016</small>